

# Operating manual for Compac Manually operated professional Jack to the owner/user

Thank you for buying this Compac professional jack.

When correctly used and cared for, this product will serve you safely and reliably for many years. Read this operator and safety manual carefully before use, for correct and safe operation of the professional jack.

On receiving the product, check it for visible damage, cracks or leakage.

Store this operator and safety manual with the product at all times.

**Compac Hydraulik A/S**  
**Strandhusevej 43**  
**DK-7130 Juelsminde**  
**Denmark**  
**Tel.: +45 75 69 37 22**  
**Fax number: +45 75 69 54 18**  
**E-Mail: [info@compac.dk](mailto:info@compac.dk)**  
**Web: [www.compac.dk](http://www.compac.dk)**

## Warranty

Compac Hydraulik A/S provides a 36-month warranty against faulty materials and workmanship from the date of purchase.

Compac Hydraulik A/S disclaims any responsibility for improper use, alterations in construction, use of non-original parts and repairs and adjustments made by unauthorised personnel.

Compac Hydraulik A/S reserves the right to make changes to the product without notice if this can be done without significant changes to the technical specifications.

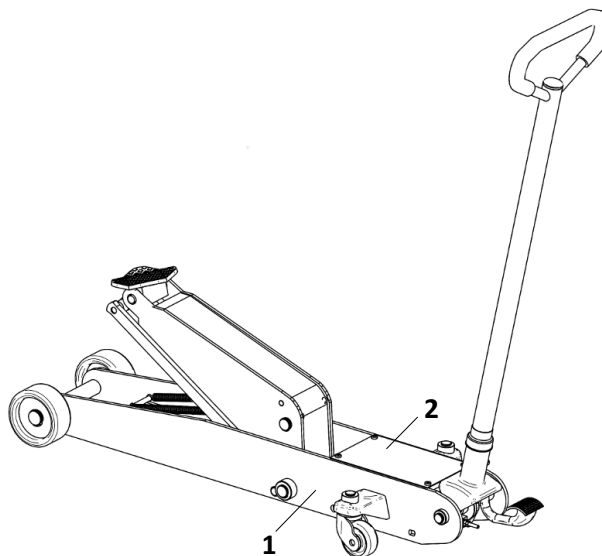
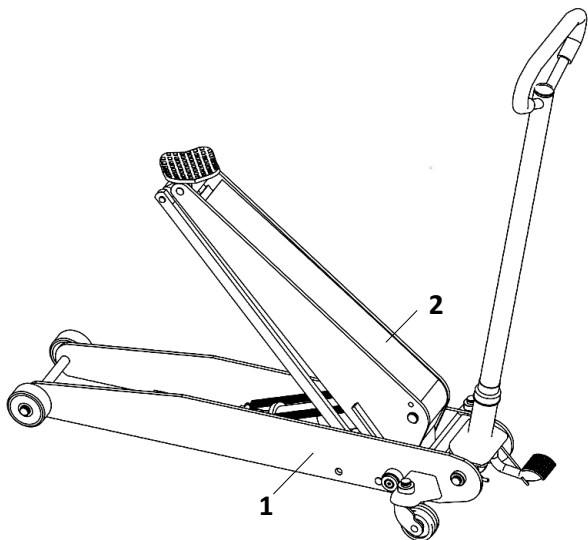


This unit was manufactured in accordance with the provisions in the COUNCIL DIRECTIVE OF 2006 (2006/42/EC) .

Owner:

## Required safety and information labels on the product

For specific information, see the attached CE Certificate.



1

<b>OMPAC</b>	
Compac Hydraulik A/S* Strandhusevej 43* DK-7130 Juelsminde	
Type/Type/Type	xT-xx Gx
Netto vægt/ Nettogewicht /Net. Weight/Poids net	xx kg
År/Baujahr/Year/Année	Year - Month
Max. Cap.:	xxxx kg
<b>CE</b>	

2



## General safety

### Safety instructions



**DANGER**

Failure to observe the following may result in serious bodily injury or death, as well as damage to property.

The professional jack is a manually operated jack designed only for lifting vehicles with a maximum load of that stated on the attached CE Certificate and on the product label on the jack.

- Incorrectly executed work may result in life-threatening accidents.
- Never make any alterations in the product's construction.
- Do not use damaged or altered equipment.
- Inspect the general condition of the jack before each use.
- Check for oil leaks, breaks, cracks or bent parts, loose or missing parts, and any other condition that could affect the proper and safe function of the jack.
- The jack may only be used for vertical lifting on a horizontal, level and firm surface in a well-lit area.
- Lift the centre of the jack's saddle, and use only the vehicle manufacturer's recommended lifting points for lifting and supporting the vehicle (See Fig. 3)
- The jack is only designed for lifting, not for supporting the vehicle. Therefore, always use a correctly positioned and dimensioned approved support stand under the vehicle immediately after the jack has lifted the vehicle and before beginning any work on the vehicle.
- Always pull the hand break before lifting, to prevent the vehicle from moving while it is being lifted.
- Do not crawl in underneath the vehicle until the support stands are correctly placed, as this could lead to serious injury or death.
- If lifted too high, the vehicle risks tipping over.
- When lifting, any loads must be fastened, to prevent them from shifting.
- Minimum distance to walls, doors and other fixed objects must not be less than 0.5 m at any time when tipping the vehicle.
- Tipping of the load is not allowed if it could result in the spilling of fuel, battery acid or other fluids from the vehicle.
- Users and others must keep a safety distance of at least 0.5 m from the load.
- No people or animals may be in the vehicle while it is being lifted.
- The user must **not** move the jack around while it is carrying a load.
- If irregularities arise that could be of significance to safety, the jack must not be used until the error has been corrected.
- The unit must not be used if it is leaking oil, or if the unit is functioning in a way that is different from the description in the operating instruction. If this is the case, stop using the jack immediately and contact an authorised service technician for inspection and, if needed, repair of the unit so that it may be used safely again.
- Inspection of the jack must be done by a qualified individual at least once a year.
- Never perform service on a jack while it is carrying a load.
- Make sure that warning and information signs on the product are legible and intact at all times.



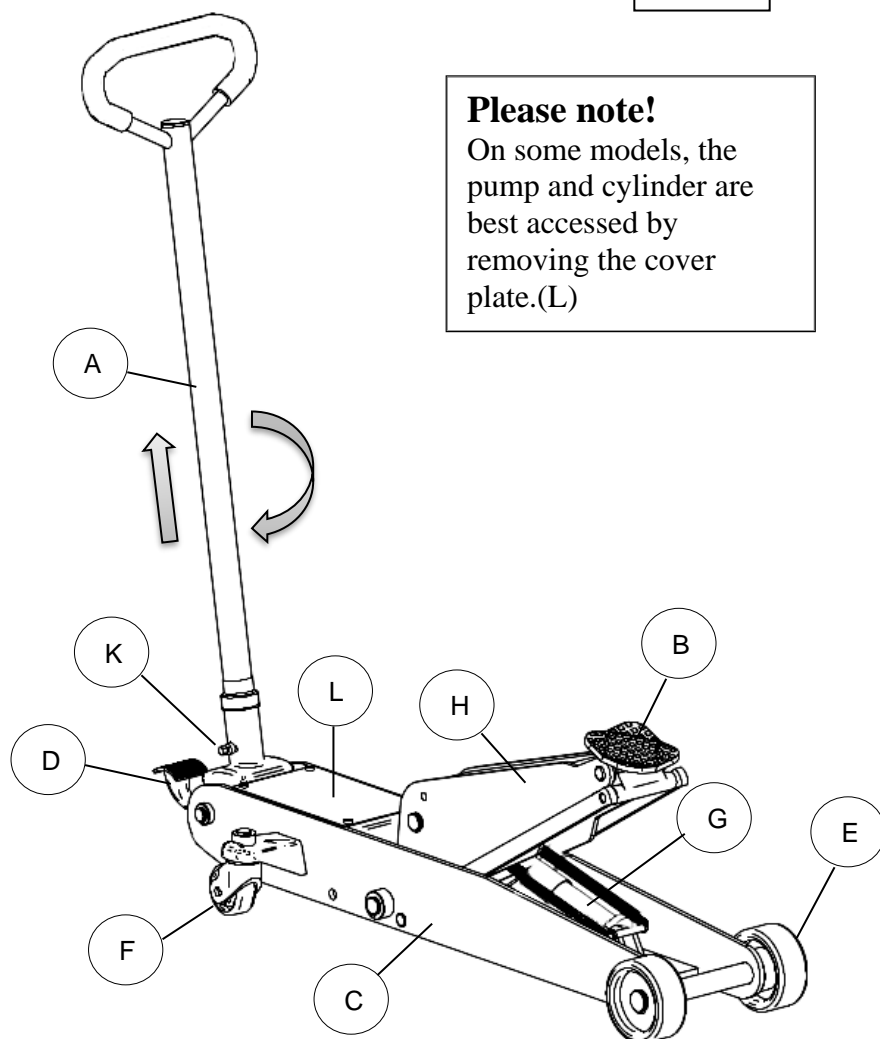
**INFO**

Do not lift the jack from the manoeuvring rod, as it is only constructed for manoeuvring the jack and operating the jack's pump – not for lifting.

For the most recent updates, see [www.compac.dk](http://www.compac.dk) under "Service".

## Component overview

Fig. 1



**Please note!**

On some models, the pump and cylinder are best accessed by removing the cover plate.(L)

Pos.	Name
A	Handle/Pumping rod
B	Saddle
C	Trolley
D.	Foot pedal for fast lifting
E.	Wheel (fixed)
F	Wheel (swivel)
G	Cylinder
H	Lifting arm
K	Finger screw
L	Cover plate

## Functional description

The lifting arm is raised using the foot pedal (D), which quickly raises the saddle (B) to the vehicle's lifting point.

To lift the load, the pumping rod (A) is used, which moves the cylinder (G) forward, lifting the load.

The cylinder is located in the dolly (C) and moves the lifting arm (H) up with the saddle.

To lower the jack, pull the pumping rod up and carefully turn it clockwise; this lowers the load.

The manoeuvring rod has a double purpose, as it is also used for manoeuvring the jack, in addition to lifting/lowering the jack.

The jack is equipped with 2 fixed wheels (E) in front and 2 swivel wheels (F) in back, for easier manoeuvring.

## Mounting the manoeuvring rod before use

Loosen the finger screw (K) on the side of the head of the manoeuvring rod, insert the manoeuvring rod and tighten the finger screw with your finger, so it catches the L-groove in the rod.

The screw should be very easy to tighten with your finger if it is correctly positioned. If you feel resistance, do not tighten the screw.

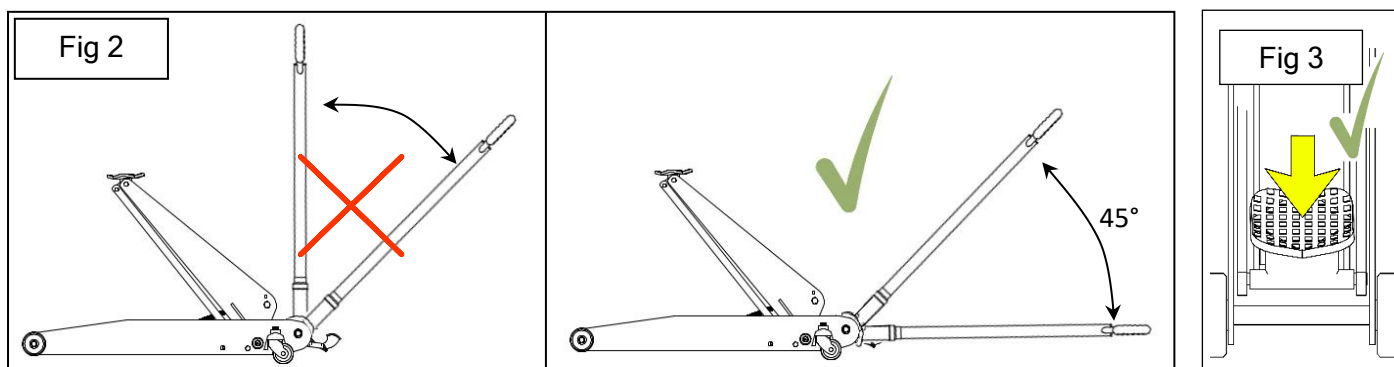
## Moving the saddle to the lifting position

Use the foot pedal to move the saddle quickly into position under the load.

**Important!** It is important that the lifting point is located centred and secure on the lifting saddle (See Fig. 3).

## Lifting the load

When the saddle is touching the load/lifting point, use the pumping rod as shown in (Fig.2).



Note: Position the pumping rod at a 45-degree angle and then pump downward.

This is done to protect the pump from overload and to achieve the most ergonomically correct work position.

**Warning!** Failure to observe the above instructions may damage the pump.

When the jack is overloaded, the overload valve opens, and the load cannot be lifted.

## Lowering the load



**WARNING**

Before lowering the load, make sure no one is under or near the vehicle.

Pull up on the handle/pumping rod and turn it to the right. The lowering speed can be adjusted through the amount of the rotation.

## Maintenance instructions



### General maintenance

Follow this maintenance instruction, to preserve the jack's safety, performance and service life.

- All moving parts must be inspected, cleaned and lubricated once a month using a moisture-displacing and acid-free lubricant.
- Check the jack for oil leaks and call an authorised service technician if required.
- In case of rust, remove the rust and protect with a rustproofing agent.
- Check that wheels, retaining rings, nuts, bolts, and mandrels are correctly mounted.

### Cleaning

Ordinary cleaning with mild soap (i.e. dishwashing detergent, auto shampoo) and a soft brush.

Thorough drying will protect the jack's painted surfaces.

Never wash the jack using a high-pressure cleaner, as this may damage the jack's surface and components.

### Jack storage

The jack should always be stored in horizontal position in a dry and temperate climate.

### Repair

In case of repair of the jack, use only original Compac parts for reliable and safe operation.

This work must be done by a qualified hydraulics specialist.

Use of non-original parts may make the jack unsafe for use and nullifies the warranty.

Therefore, use only original parts from Compac.

### Oil change

If it becomes necessary to refill oil in the jack, see the section “Periodic maintenance and inspection”, and follow Action 3A.

### Oil information

Replace the oil as needed or at every 1 - 2 years.

Oil type: Catrol Hyspin AWS 22 or similar hydraulic oil with the same specifications.

Do NOT use brake fluid, motor oil or the like!

### Every month

**Lubrication:** Lubricate mechanical parts with acid-free lubricant/grease.

**Check oil level:** See the section “Periodic maintenance and inspection”, and follow Action 3A.

### Every quarter

Remove the retaining ring on the swivel wheels and lubricate the ball bearings using acid-free grease.

### Annual maintenance

Please see the section Periodic Maintenance and Inspection and complete the log book.

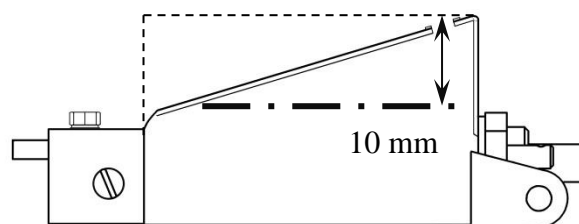
**Action 3A:** Lower the lifting arm to its bottom position before inspection.

For oil inspection/filling, remove the filling plug at the top of the oil container.

On some models, you first have to remove the cover plate that is covering the container.

The correct oil level is 10 mm measured from the oil container’s filling hole, down to the surface of the oil.

NEVER overfill the oil container.



When refilling oil, pump with the pumping rod to move the oil around in the system and to get any air out of the system. Make sure to pump the jack in the highest position and then lower it to the lowest position before filling, and fill oil to the correct level. Re-place the oil plug again and dry the area with a clean cloth before use.

Use only hydraulic oil Castrol Hyspin AWS 22 or similar with the same specifications.

Do NOT use brake fluid, motor oil or the like, as these may damage the jack’s internal components.



**RECYCLING**

### Disposal/destruction

Re-use the transport packaging if possible or bring it to a recycling centre.

For service, repair or disposal of the jack, drain the oil into an approved container and bring it to the proper authority. For disposal of the jack, bring it to a recycling centre.