



SKU : 362651

VHF series machines feature large travels, a vertical and horizontal spindle with separate drives for powerful machining. The vertical head swivels out ($\pm 45^\circ$) and the quill is movable. All models of this series are ideally suited for applications in repair shops or training shops.

- Tilting vertical milling head
- Automatic feed in X and Y axes
- Horizontal spindle with counter holder
- Extensive package of standard accessories



TECHNICAL SPECS

WORKING AREA

Drilling capacity in steel	30 mm
Max. end mill diameter	25 mm
Tapping capacity, steel	M 16
Max. end face mill diameter	100 mm
Table set up area	1270 mm x 280 mm
Table load capacity (max.)	150 kg

TRAVELS

Travel X-axis	700 mm
Travel Y-axis	210 mm
Travel Z-axis	310 mm

VERTICAL MILLING HEAD

Spindle speed (vertical)	115 1/min - 1750 1/min
Spindle mount	ISO 40
Quill stroke	120 mm
Throat	200 mm - 650 mm
Spindle nose-to-table surface distance	50 mm - 375 mm
Milling head swivel range	45 deg

RAPID FEED

Rapid feed Z-axis	380 mm/min
-------------------	------------

HORIZONTAL MILLING SPINDLE

Spindle speed (horizontal)	40 1/min - 1300 1/min
Spindle mount	ISO 40
Horizontal spindle-to-table surface distance	0 mm - 310 mm

FEED

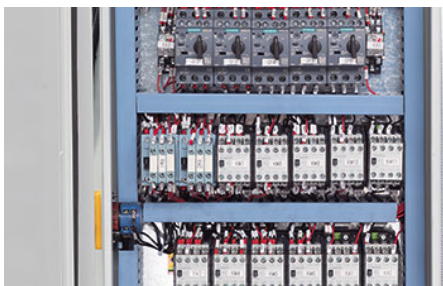
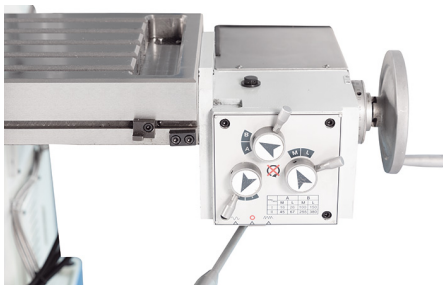
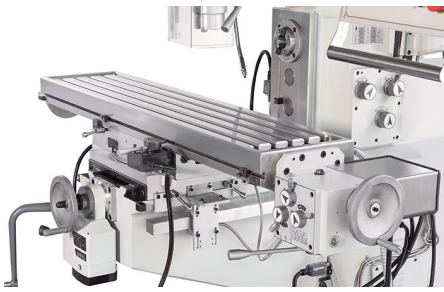
Feed speed X-axis	16 mm/min - 380 mm/min
Feed speed Y-axis	0 mm/min - 700 mm/min

DRIVE CAPACITY

Motor rating horizontal spindle	2.2 kW
Motor rating vertical spindle	0.85 kW - 1.5 kW

MEASURES AND WEIGHTS

Overall dimensions (length x width x height)	1.7 m x 1.45 m x 2.45 m
Weight	1400 kg



PRODUCT DETAILS

- This excellent price/performance ratio is made possible by high volume production with standardized VHF assemblies
- Extremely rigid machine bed made of high-strength cast-iron with heavy ribbing
- Precision-ground guideways with hardened surfaces for long-term accuracy and wear-resistance
- The milling table features a large setup area
- Vertical and horizontal spindles each have a separate drive with gearbox for maximum machining power
- The vertical head swivels to both sides ($\pm 45^\circ$), quill feed through capstan or with fine feed hand wheel
- When working with the horizontal spindle, the complete top beam/head assembly can be rotated $\pm 180^\circ$ on the column
- Standard outer arbor support with bronze plain bearings accommodates long milling arbors in the horizontal spindle
- Feed system with manual gearbox on X-axis and infinitely variable feed unit on the Y-axis
- Height adjustment of the work table via automatic feed - precision feed via smooth hand crank
- Swiveling control panel with integrated position indicator for maximum operator comfort
- Coolant system and chip tray are included

STANDARD EQUIPMENT

- 3-axis position indicator X.Pos 3.2
- Coolant system
- Work lamp
- Operating tools
- Operator instructions
- M16 draw bar
- Outer arbor support for horizontal milling
- Chip tray
- Cutter arbor $\varnothing 27$ mm