



SKU : 162365

“Tool to the workpiece” is the motto of the high-speed radial drilling machines of the KSR series. They offer unique flexibility with clamping surfaces for different applications on three machine sides. The KSR VT also has an electronically controlled servo quill feed and a touchscreen operating display, which supports the selection of the correct machining parameters for drilling and thread cutting. The ideal solution for single and small series production, which is often used in maintenance as well as in tool and steel construction.

- Unique operating concept
- 3 work stations
- Expanded control of machine functions
- Servomotor-driven quill feed
- Linear guides for smooth, high-precision movement of the arm

TECHNICAL SPECS

WORKING AREA

Drilling capacity	50 mm
Tapping capacity, steel	M 32
Throat	960 mm
Spindle nose-to-table surface distance	760 mm
Head swivel range	± 90°
Column diameter	220 mm
Table set up area	1200 mm x 505 mm
Column stroke	400 mm
Quill stroke	200 mm

TRAVELS

Upper beam travel	590 mm
-------------------	--------

HEADSTOCK

Spindle mount	4 MT
Spindle speed (infinitely variable)	50 1/min - 2000 1/min

FEED

Feeds	1 mm/min - 300 mm/min
-------	-----------------------

DRIVE CAPACITY

Motor rating main drive	3 kW
Motor rating height adjustment	1.5 kW
Motor rating feed	1.26 kW
Motor rating hydraulic pump	0.37 kW
Motor rating coolant pump	0.085 kW

MEASURES AND WEIGHTS

Overall dimensions (length x width x height)	1.72 m x 1.2 m x 2.25 m
Weight	2740 kg



PRODUCT DETAILS

- Table, column, male die and gear head are made of thick-walled high-grade cast-iron and the entire machine structure features high-quality components and precision machined surfaces
- The large work area can be expanded by mounting optional swivel and angle tables for a wide variety of clamping and machining options
- The male die features a low-maintenance, very rigid design and runs smoothly in two large linear roller guideways, allowing exact positioning with minimal effort
- The entire machine is extremely smooth running for effortless operation in a production environment
- Column and male die are equipped with hydraulic clamping fixtures
- Main spindle drive with 2 gear steps, infinitely variable speed in each gear step
- For angular bores, the drill head can be rotated 45° in either direction
- A central lubrication system simplifies maintenance



The high-resolution touchscreen features a scratch-resistant surface. Matching rpm and feed speeds for each drill can be recalled from a database and automatically applied.

Electronically controlled servo quill feed

- A servo-motor provides infinitely variable control of the quill feed
- The depth stop is set electronically with a positioning accuracy of +/- 0.1 mm

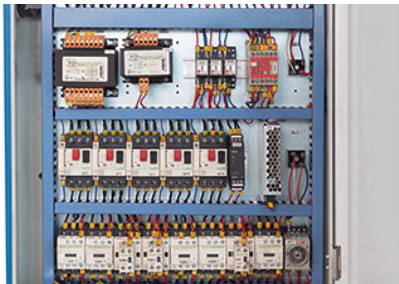
Improved functionality and improved layout of the large touchscreen display

- All machine functions are controlled and displayed on the touchscreen
- Measuring units for input and display can be selected by the operator (mm or inch)
- In Thread Cutting Mode, the quill will automatically reverse direction upon reaching the selected thread depth
- Various alarm screens warn the operator in case of operational errors and display information on the operational state
- The control software also provides recommendations for rpm and feed in relation to the desired drill size
- The high-performance coolant system is activated at the touchscreen



STANDARD EQUIPMENT

Touch screen monitor
 Additional setup areas at the side and rear
 Cube table
 Swivelling horizontal table
 Work lamp
 Coolant system
 Thread cutting function
 Reduction sleeves
 Operating tools
 Operator manual



OPTIONAL EQUIPMENT

- Set of collets Ø6-16 mm, SKU : 253672
- Compound Sliding Tables 640 x 205 mm, SKU : 253673